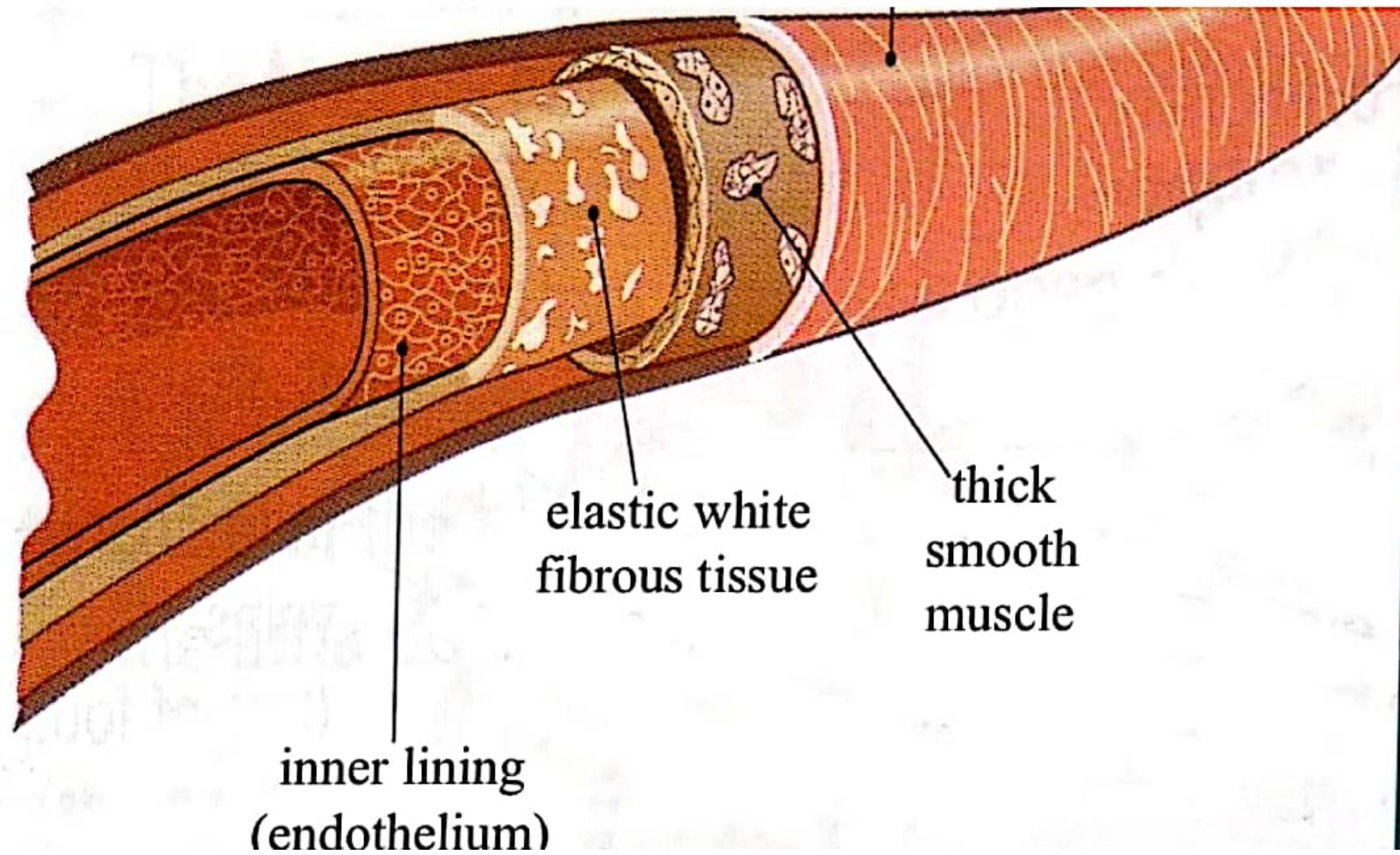
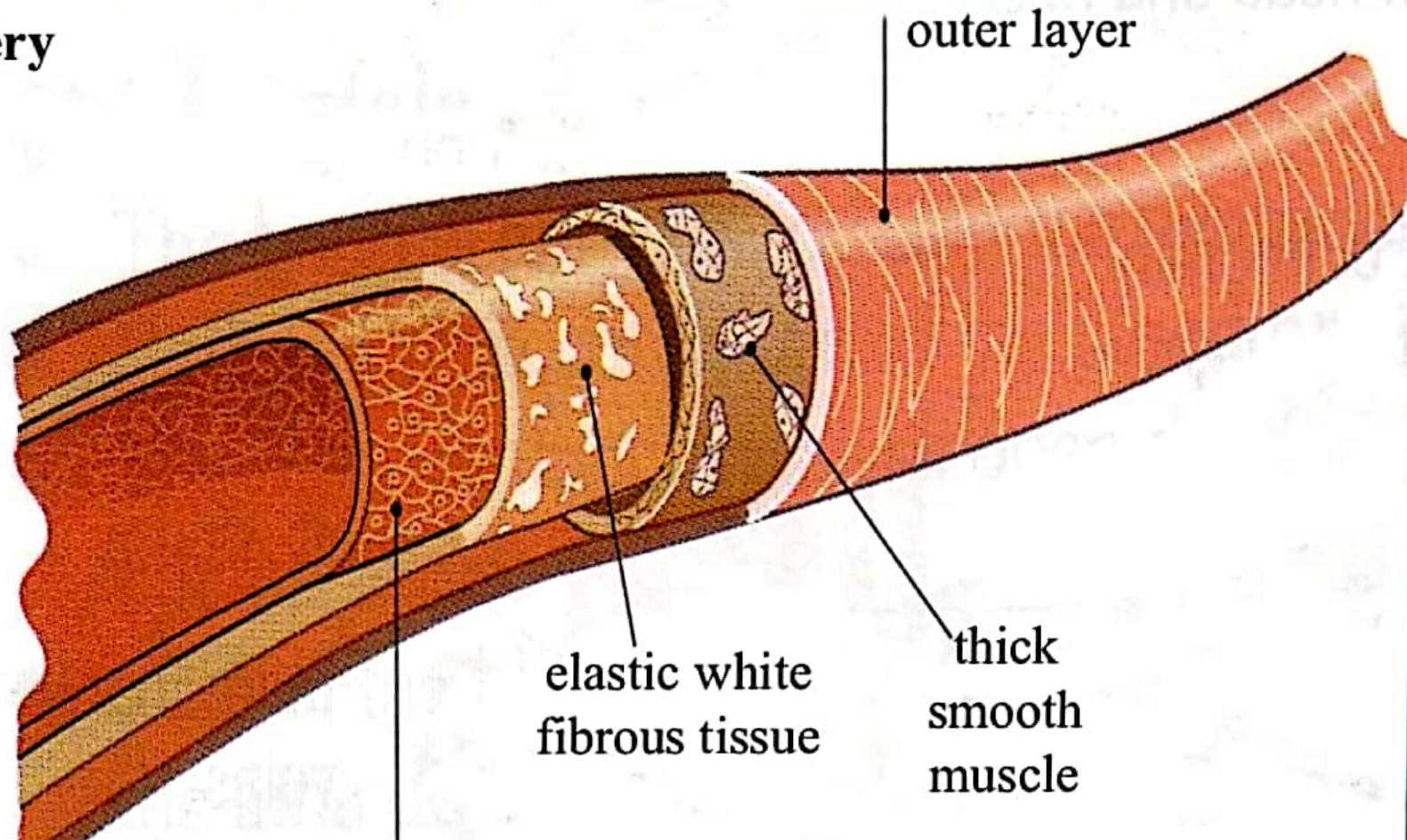


ARTERIES

- Carry blood away from the heart
- Thick muscular walls
- Lots of elastic tissue in wall
- Relatively small lumen
- Blood under high pressure
- Blood flow rapid
- Blood flows in pulses
- No valves



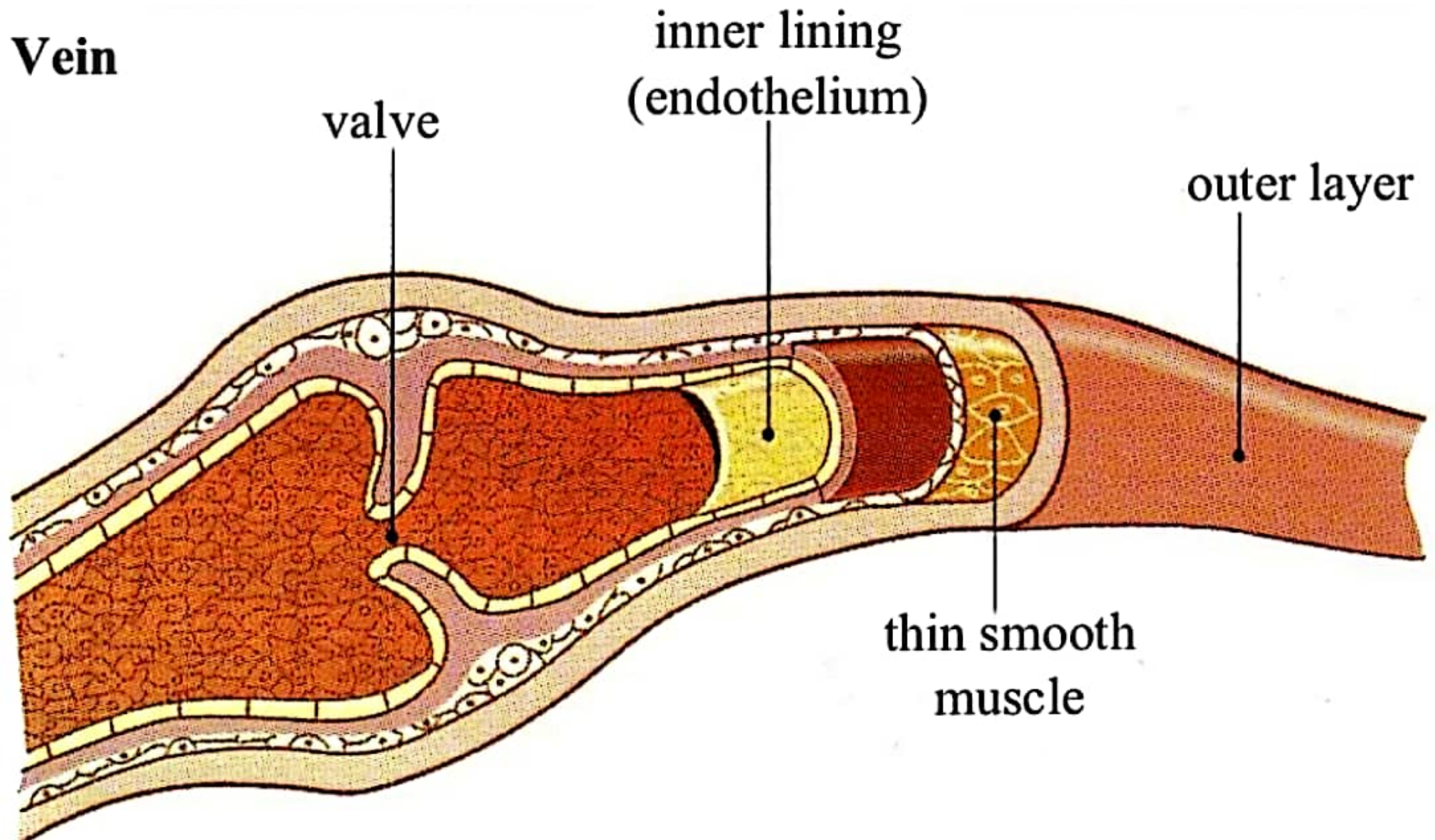
artery



VEINS

- Carry blood back to the heart
- Thin muscular walls
- Little elastic tissue in the wall
- Relatively large lumen
- Blood under low pressure
- Blood flow is slow
- No pulse
- Valves prevent backflow of blood

Vein



CAPILLARIES

- Link up arteries and veins in the tissues
- No muscle
- Wall made up of one cell thick **endothelium**
- Small lumen – just large enough for a red blood cell to squeeze through
- Pressure falls as blood passes along capillary
- Blood flowing is slowing down
- No pulse
- No valves

